

# JURUPA ROAD

## GRADE SEPARATION



## CONSTRUCTION ALERT: Week of July 11, 2022

Nighttime sewer work continues during extended hours 8 p.m. to 7 a.m. with a nightly intersection closure at Jurupa Road and Felspar Street.



### TRAFFIC CONTROL

Jurupa Road and Felspar Street  
Nighttime intersection closure  
PLEASE DRIVE WITH CAUTION

Monday – Friday nights  
8 p.m. to 7 a.m. the following  
morning



### PROGRESS UPDATE

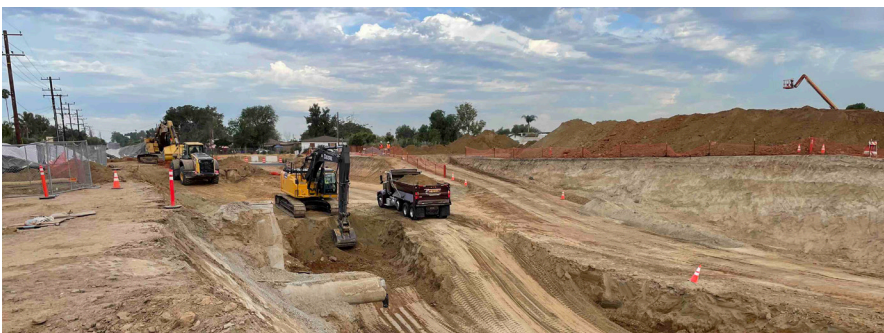
- **SEWER** Nighttime work is planned during extended hours with nightly intersection closure on Jurupa Road and Felspar Street. BUSINESS ACCESS REMAINS OPEN for all shopping centers. Alternate business center driveways may close as needed during nighttime work.

Please use Pedley Road and Galena Street for the detour to Felspar Street.

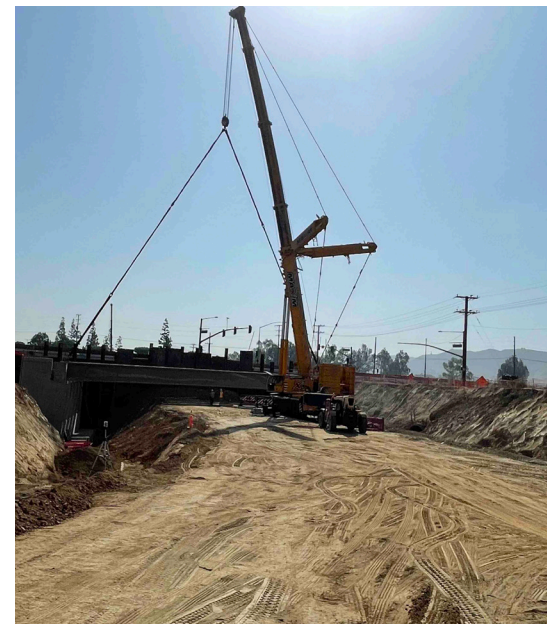
**STORM WATER PUMP STATION** Work on the underground wet well is almost complete and backfilling will begin in mid-July.

**BRIDGE SUPPORT SYSTEM** Crews are grading in preparation for retaining wall construction on the Van Buren Boulevard bridge.

- **ROADWAY EXCAVATION** Crews are excavating dirt to lower Jurupa Road west of Van Buren Boulevard and will transport the dirt to the east side of Van Buren Boulevard to backfill the storm water pump station wet well area once it's complete.



Crews excavating dirt to lower Jurupa Road west of the Van Buren Boulevard bridge. This dirt will be transported to backfill the Storm Water Pump Station wet well area east of Van Buren Boulevard at Felspar Street.



Looking east on Jurupa Road to the very beginning stages of the new Van Buren Boulevard bridge where this crane placed six of the 12 large, 17,000 pound concrete girders for the bridge support system.

**STAY CONNECTED** Construction Hotline 800.679.9570 [www.JurupaGradeSeparation.com](http://www.JurupaGradeSeparation.com)



Facebook @JurupaGradeSeparation



Instagram @JurupaGradeSeparation

Project Partners

