

JURUPA ROAD

GRADE SEPARATION



Construction Update: Week of October 23, 2023



Daytime lane closures planned Monday, Oct. 23, on Van Buren Blvd. in both directions. Nighttime lane closures planned near the intersection of Pedley and Jurupa roads.

TRAFFIC CONTROL



Van Buren Blvd. near Jurupa Connector Road
Monday, Oct. 23 | 9 a.m. to 4 p.m.

Northbound and southbound reduced to one lane in each direction for crews working in the roadway. Please use an alternate route and plan for traffic delays.

Pedley and Jurupa roads

Nighttime Monday – Friday | 7 p.m. – 5 a.m.

Lane closures with traffic flagging are planned for crews working in the roadway.

PROJECT UPDATE

Storm Water Pump Station

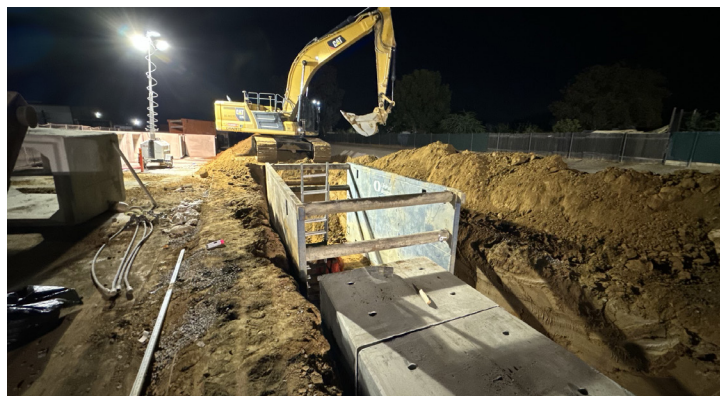
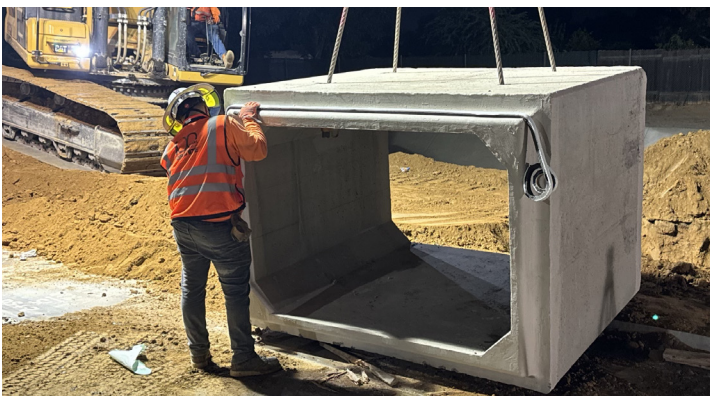
Crews continue ongoing construction activities on the building's interior and exterior.

Storm Drain Construction

Behind Felspar Street / Jurupa Road Business Plazas

Through November | Nighttime, Monday – Friday | 7 p.m. to 5 a.m.

Contractors continue to install 6-foot by 4-foot reinforced concrete box storm drain behind the business plazas located near Felspar Street and Jurupa Road.



Contractors at work installing the concrete storm drain. They are working in a northwesterly direction to connect the Bly Channel, storm water pump station and the Jurupa undercross systems together to prevent flooding during future storm events.

This information may change due to weather or field conditions.

STAY CONNECTED Construction Hotline 800.679.9570 www.JurupaGradeSeparation.com

 Facebook @JurupaGradeSeparation

 Instagram @JurupaGradeSeparation

Project Partners

